

# The Christ Church News



30<sup>th</sup> January 2026

Our value this term is: **PERSEVERANCE**

Telephone: (01242) 523392

Email: [admin@christchurch.dgat.org.uk](mailto:admin@christchurch.dgat.org.uk)

Web: [www.christchurchschool-chelt.co.uk](http://www.christchurchschool-chelt.co.uk)

**RESPECT COMPASSION PERSEVERANCE COURAGE FRIENDSHIP**

Dear Parents and Carers,

In this week's OPAL service Miss Hillier and Miss Greenwood launched an exciting competition for the children to take part in during their OPAL lunch times. Please look later in the letter for how your child can take part.

We have also enjoyed visits and had visitors into school this week. The children are lucky that so much enrichment takes place thanks to our dedicated staff. We also had a group of headteachers visit from another county visiting to look at our good practice which we are always happy to share.

Have a good weekend all.

Best wishes,

Mrs Pope

## Diary Dates 25-26

Date	Event
30 <sup>th</sup> January	Evening event – PTA adult quiz (please see below)
4 <sup>th</sup> February	Y5 Bournside Theatre trip - please let the office know if you do not want your child to participate
6 <sup>th</sup> February	PTA school disco – Reception, Y1, Y2 - 4.45pm-5.45pm Y3, Y4, Y5, Y6 - 6.00pm-7.00pm
13 <sup>th</sup> February	PTA sponsored pancake flip
16 <sup>th</sup> -20 <sup>th</sup> February	Half term – School closed
23 <sup>rd</sup> February	INSET day – school closed for children
27 <sup>th</sup> February	PTA Wine Tasting (adults only!)
5 <sup>th</sup> March	World Book Day

12th March	Y4 'In the Net' - information to follow
20th March	Red Nose Day
24th March	Y2 lead Easter Service at Church 10am Parents' Evening – booking information to follow
25th March	Rock Steady concert 2.30pm Parents' Evening – booking information to follow
26th March	Y2 Sandfield Farm trip – information to follow
27th – 29th April	Y4 Residential trip
6th May	Class photos
11th - 15th May	Y6 SATs week
21st May	Y2 Slimbridge trip – information to follow
16th June	Sports Day
20th June	PTA Summer Picnic **please note change of date **
23rd June	Reserve Sports Day
8th – 10th July	Y6 Residential trip

### Lost Property

The lost property boxes on the playground are overflowing. Please take time to have a look to see if there is anything belonging to your child/ren. Please also remember to name your child's clothing – we will try to return lost items to their owners if we can, but without a name this is impossible.

### Year 5

Year 5 have enjoyed learning about proportions of the human figure in art. They began by drawing accurate stick figures and then used this when drawing people in different positions using artists' mannequins.



### OPAL Competition

In this week's OPAL service Miss Hillier and Miss Greenwood launched an exciting competition for the children to take part in during their OPAL lunch times. Children can take part in groups of four (or less) to build a Duplo/mega blocks creation. This could be a large animal, a house, a person or anything else that they can build from their imagination. A separate sandcastle competition will also be taking place in our fantastic sand pit. Children can build traditional sandcastles or any other sand creation. Entries will be photographed by our Midday Supervisors so we will be able to share the children's creations with you in future newsletters. Prizes for both competitions will be on offer.



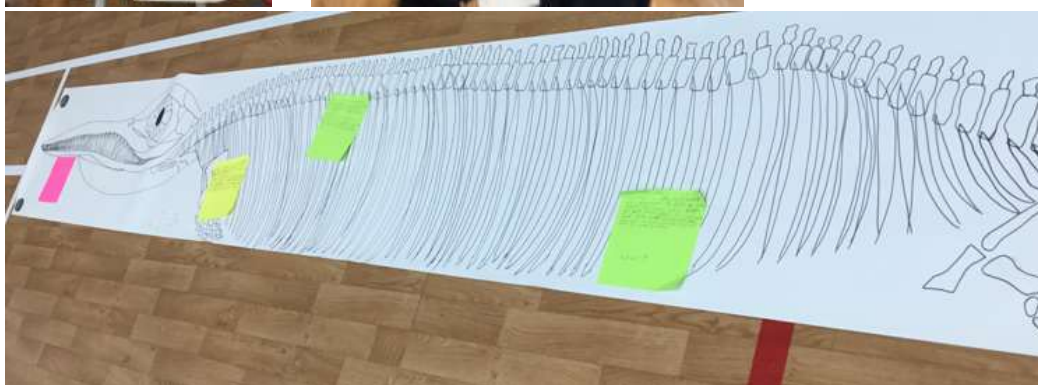
## Year 2 History – Mary Anning and Edward Wilson

This week we had an afternoon with history student teachers working with the whole class to learn about Mary Anning. The children loved their intense two-hour session and left school with lots of facts.

Did you know dinosaur means terrible lizard?

Did you know pterosaur means flying lizard?

Did you know ichthyosaur means fish lizard?



The students had drawn a scale drawing of the ichthyosaur Mary Anning found in Lyme Regis.

Year 2 also walked to the Wilson Museum and Art Gallery for a polar workshop about Edward Wilson our local polar explorer they are learning about this term.

We listened to the whole story from start to finish of the life of Edward Wilson. We saw artefacts and photographs and even some of his paintings from his time in Antarctica.

We played the game Journey across the Ice, sketched a kingfisher like Edward would have done as a child and learned about how the clothing they used in Antarctica. We walked around the gallery looking at his artefacts and saw Clarence the statue of an Emperor Penguin. We tried on clothing that has actually been worn in Antarctica! Thank you again to our parent helpers.



## World Book Day

Please look out for the letter detailing our plans for World Book Day this year. Dress code: come as a word! We are hoping this makes things easier and accessible for all!

Dress as a word ideas...





### Eco Council

This week Eco Council made another visit to our local care home where they got to work planting some bright and colourful plants for the residents and wildlife to enjoy. They are also excited to see all the bulbs our classes planted on Go Green Day emerging for the Spring. Their next mission will be to take part in the forthcoming Great British Spring Clean!



### Goodbye and thank you to Mr Taylor

Today we said goodbye to our school business manager, Mr Taylor. We thank him for all he has done in school and wish him success in his new role in the central team at DGAT.



## **Attendance**

Thank you for all you do to ensure your child is making the most of their educational opportunities. A gentle reminder of your responsibility in helping frame the bigger picture is included from our policy below:

- providing accurate and up-to-date contact details.
- providing the school with more than one emergency contact number.
- updating the school if their details change.
- ensuring that their children attend school daily when school is open.
- promoting good attendance with their children.
- only requesting leave of absence in exceptional circumstances.
- booking any medical appointments around the school day where possible.
- notifying the school in line with missing education processes as soon as possible when their child is unexpectedly absent because of sickness

## **Community Notices**

Next Thing Education Presents

LIMITED SPACES  
BOOK BY  
5TH FEB

# FEB HALF TERM 2026

Cooking & Robots    Coding & Inventions    LEGO Engineering    Minecraft Machines    Tech Fun

Movie Making    Video Game Design    Robot Coding    STEM Experiments    Engineering

16TH - 20TH FEBRUARY • LIMITED SPACES

What Parents Say

"Absolutely Fantastic! First time attending & my son loved it!"

★★★★★

## HOW TO BOOK

STEP 1: SCAN QR OR VISIT

STEP 2: FILL IN OUR REQUEST CARD

STEP 3: WE'LL EMAIL YOU WITH VOUCHERS TO BOOK

CHILDREN'S VOUCHERS AND TAX FREE CHILD CARE ACCEPTED

W: [WWW.NEXTTHING.EDUCATION](http://WWW.NEXTTHING.EDUCATION)  
E: [INFO@NEXTTHING.EDUCATION](mailto:INFO@NEXTTHING.EDUCATION) T: 01442 873150

**TECH CAMP**

**FEBRUARY CAMPS 2026**

Springbank Primary Academy, GL51 0PH

£35.00 PER DAY OR £75 FOR 3 DAYS  
9 AM - 4PM, AGES 5-11

Free-Head-Search: 0240 24 044 86927

[www.nextthing.education](http://www.nextthing.education)

SCAN ME

## Bikeability Holiday Courses

Gloucestershire County Council is offering Bikeability courses during all 2026 school holidays. These courses help children aged 9-14 build cycling confidence and safety skills in small groups with qualified instructors.

### Dates/Locations

- February Half-Term Ashley Manor Prep School, Cheltenham
- Easter Holidays Bournside School, Cheltenham
- May Half-Term Kingshill School, Cotswold
- Summer Holidays Skillzone (2 sessions available) Gloucester
- October Half-Term Pineholt Village Hall, Hucclecote

### Details

Age: 9-14 years  
Cost: £10 per course  
Format: 2 x 2-hour sessions  
Bikes: Available subject to availability

Scan to book



thinktravel  
New sense of direction



Using our skills every day

Accessibility    Safety    AT&T    Equipment    Repair    Excellence

Gloucestershire COUNTY COUNCIL

**Beezee FAMILIES**

## Changing habits keep you healthy...all year long!

Our free Beezee Families programme is here to help you feel healthier and happier as a family.

### Top Tips to brave those winter mornings

**Keep hydrated.** This is a sure-fire way to get our bodies fired up in the mornings. A hot glass of water will give your body the boost it needs to start the day.

**Breakfast.** There is a reason it holds the title as the most important meal of the day! Make sure those little ones start their day with a good healthy breakfast to give our bodies the energy they need.

**Sleep.** Its important no matter your age to get enough sleep and sticking to regular sleep patterns can help support this.

### Healthy lunch boxes

Keeping school lunch boxes interesting can be a challenge at the best of times so we appreciate how hard it is to make sure they are kept healthy too.

But healthy doesn't have to be a chore, it can actually make life much easier!

Fruit is a great way to give little ones a boost of energy and if bought in packs will generally last the whole week and keep costs down too. Apples, bananas or small handfuls of grapes will add a tasty (and vibrant) addition to their lunch boxes.

### Fresh air fix

It's tough during the colder months to find ways to get our much-needed Vitamin D. Fresh air is a great way to improve both our physical and mental well-being and even short bursts of outdoor time can make a big difference.

Try wrapping the car or bus for a short walk from time to time or get the little ones wrapped up and outside for a quick play in the park.

Wait more healthy lifestyle support? Check out our website to find out how we can help your family.

Scan here or click the link



**ULTIMATE ACTIVITY CAMPS**

## GET SET FOR ULTIMATE EASTER & SUMMER HOLIDAY FUN!

Exceptional activity camps for children aged 4 to 14 at **Dean Close Prep School, Cheltenham**

**ULTIMATEACTIVITY.CO.UK**

EARLY BOOKING OFFER NOW ON!



# JET AGE MUSEUM

**SPECIAL HALF TERM OPENING**  
**WEDNESDAY 18 FEBRUARY 2026**  
**10.00AM TO 4.00PM**



Meteor Business Park,  
 Cheltenham Road East,  
 Gloucester GL2 9QL  
 Tel 01452 260078  
 www.jetagemuseum.org

**ADMISSION FREE**  
**DONATIONS WELCOME**

Cheltenham Town **Community trust**

**£16 per day**

## FEBRUARY HALF TERM FOOTBALL HOLIDAY COURSES

Ages **5-12** | **9AM - 3PM** | All genders welcome  
**FOR ALL ABILITIES**

Run by FA qualified, first aid trained and DBS enhanced checked coaches.

**GIRLS ONLY COURSES AVAILABLE**

Courses held at:  
 BISHOPS CLEEVE FC  
 CLEEVE SPORTS CENTRE  
 ST JAMES' PRIMARY SCHOOL

SCAN ME




INFO@CTFCCP.COM | 01242 618630 | WWW.CTFCCP.COM

# SPONSORED PANCAKE FLIP 26

HELP US RAISE MONEY FOR OUR SCHOOL



**February 13**  
**Christ Church Primary School**

## SPONSORED PANCAKE FLIP 26

**February 13 Christ Church Primary School**

All the children will be invited to take part in the pancake flip at school during the day. They will all receive a certificate confirming the number of flips completed within a minute.

If sponsorship forms could please be completed and returned with the sponsorship money by Friday 28 February. You can sponsor either an amount per flip or an amount for participating its up to you.

All money raised will be used to help the school. Currently we are raising money to fund books and equipment to help support your children in school.



VENUE  
**CHRIST CHURCH PRIMARY SCHOOL**



DATE  
**FRIDAY 27TH FEB**  
**DOORS OPEN: 7PM**

THE PTA INVITES YOU TO THE  
**WINE BLUFF**  
HOSTED BY  
**D'ARCY WINE**

£20 per person



Click QR code to book

6 Wines to taste & Charcuterie included

A fun wine guessing game to see if your team can match the wines to the correct description and call out those bluff!

[Please click here to book.](#)